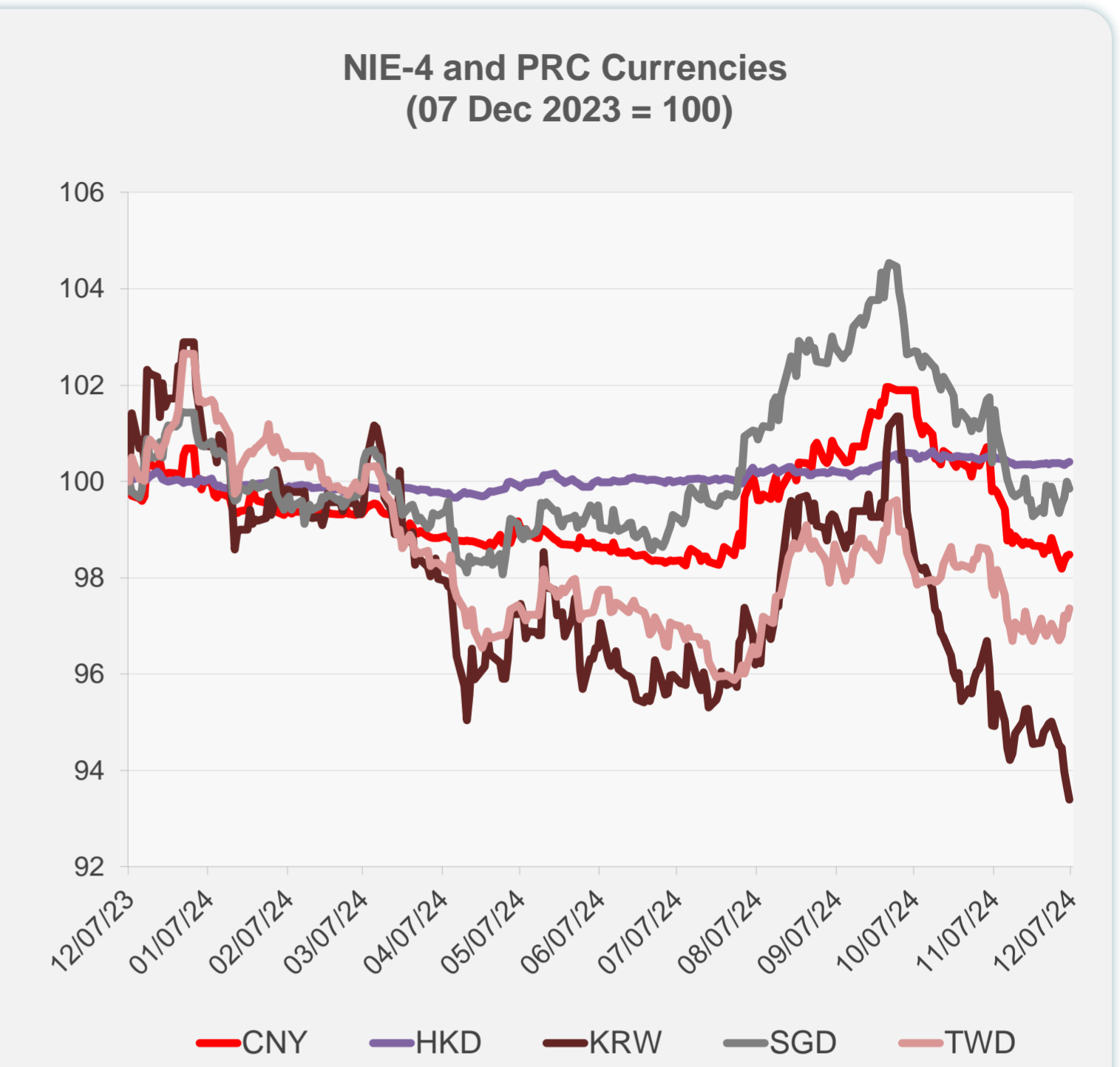
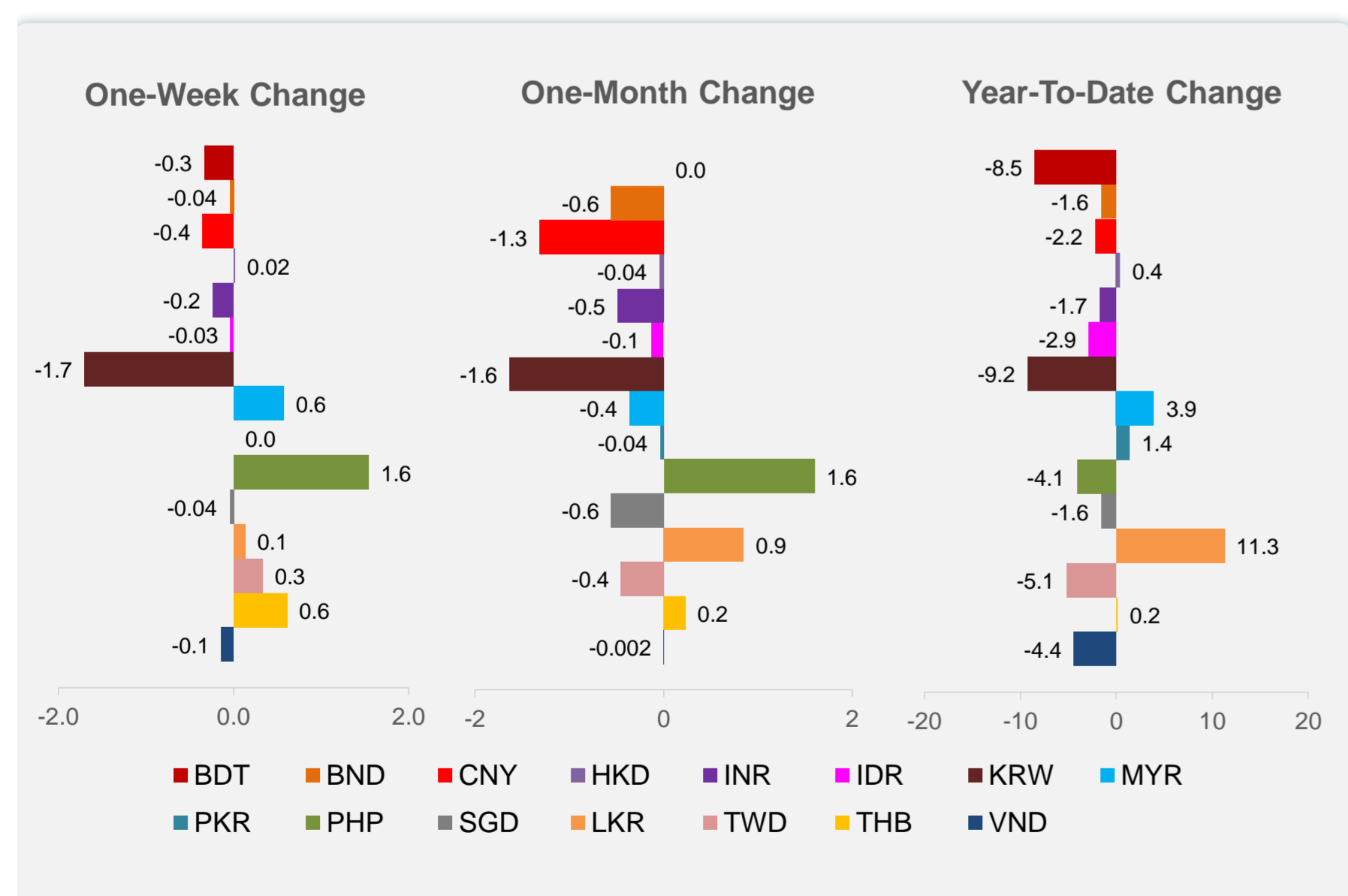
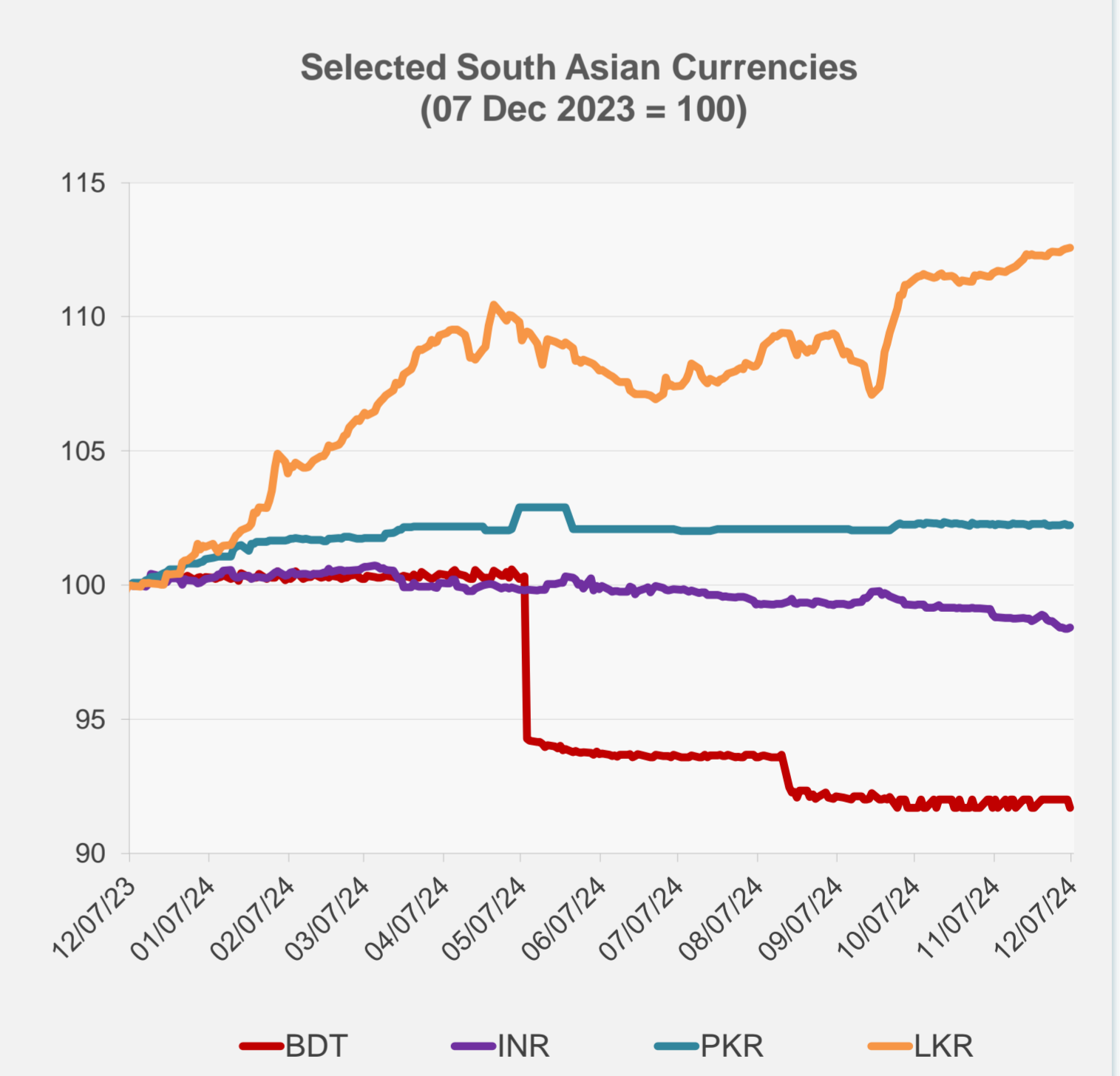
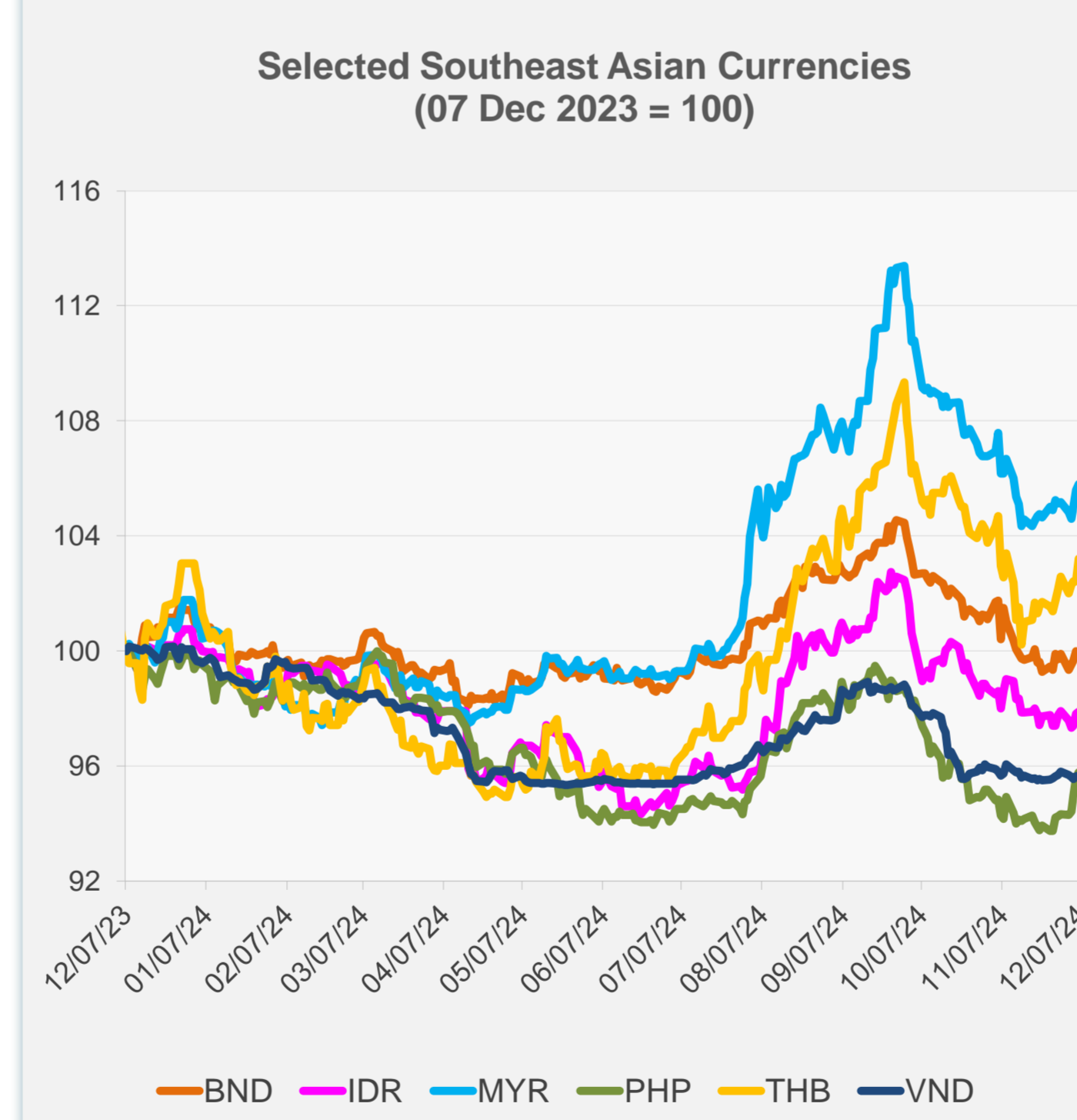


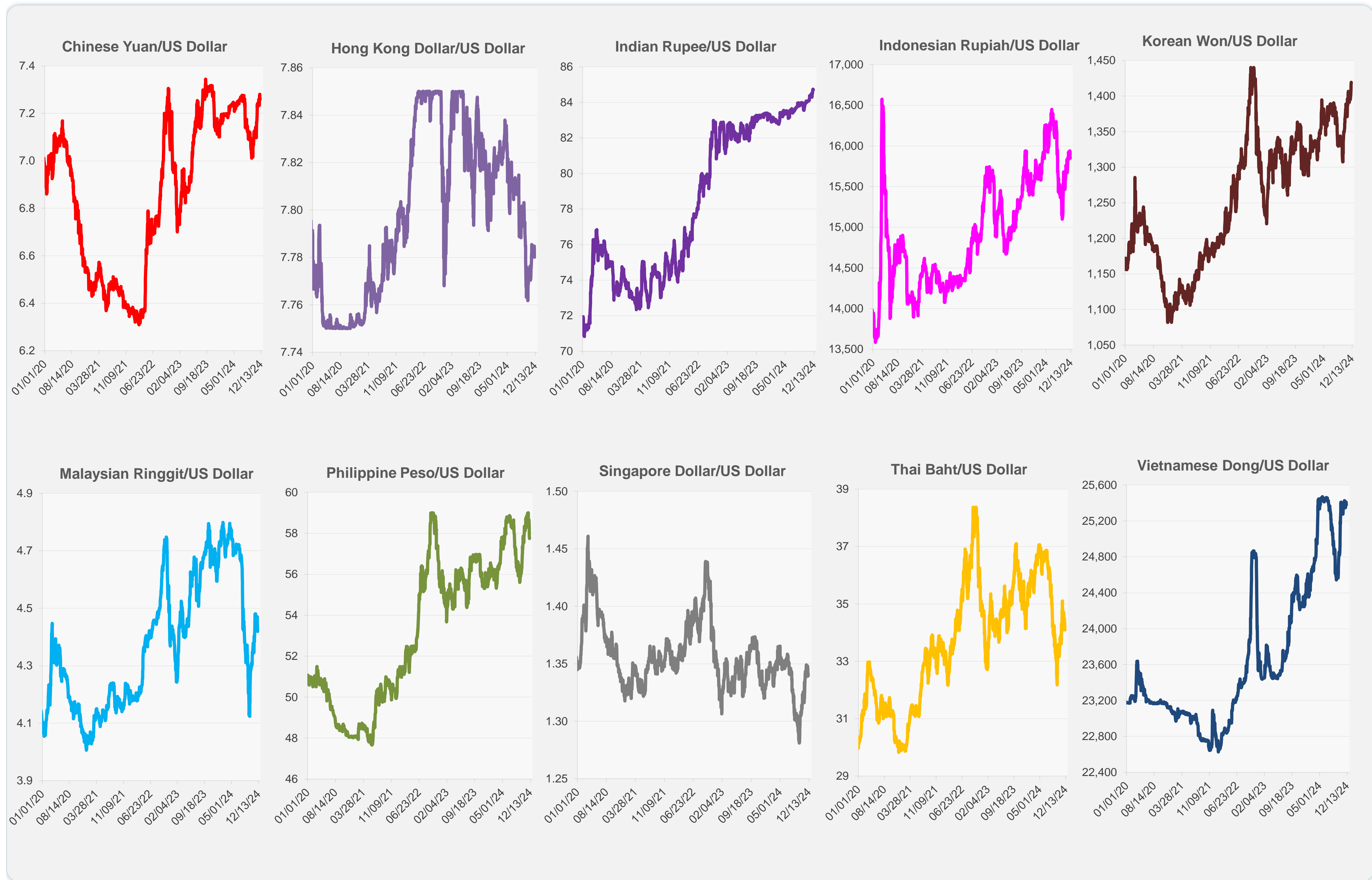
	Latest Closing	% change from Previous Day	% change from 01-Jan-24
Euro	0.95	-0.10	-4.36
Japanese yen (JPY)	149.89	0.23	-6.00
Bangladeshi taka (BDT)	119.90	-0.33	-8.47
Brunei dollar (BND)	1.34	-0.16	-1.57
Chinese yuan (CNY)	7.26	0.04	-2.18
Hong Kong dollar (HKD)	7.78	0.02	0.40
Indian rupee (INR)	84.70	0.04	-1.73
Indonesian rupiah (IDR)	15,850.00	0.06	-2.86
Korean won (KRW)	1,419.20	-0.30	-9.24
Malaysian ringgit (MYR)	4.42	0.18	3.95
Pakistan rupee (PKR)	277.93	-0.01	1.41
Philippine peso (PHP)	57.74	0.21	-4.08
Singapore dollar (SGD)	1.34	-0.16	-1.57
Sri Lanka rupee (LKR)	290.22	0.03	11.28
Taipei,China NT dollar (TWD)	32.37	0.22	-5.14
Thai baht (THB)	34.09	0.76	0.15
Vietnamese dong (VND)	25,381.00	0.04	-4.39



NIE = Newly Industrialized Economies



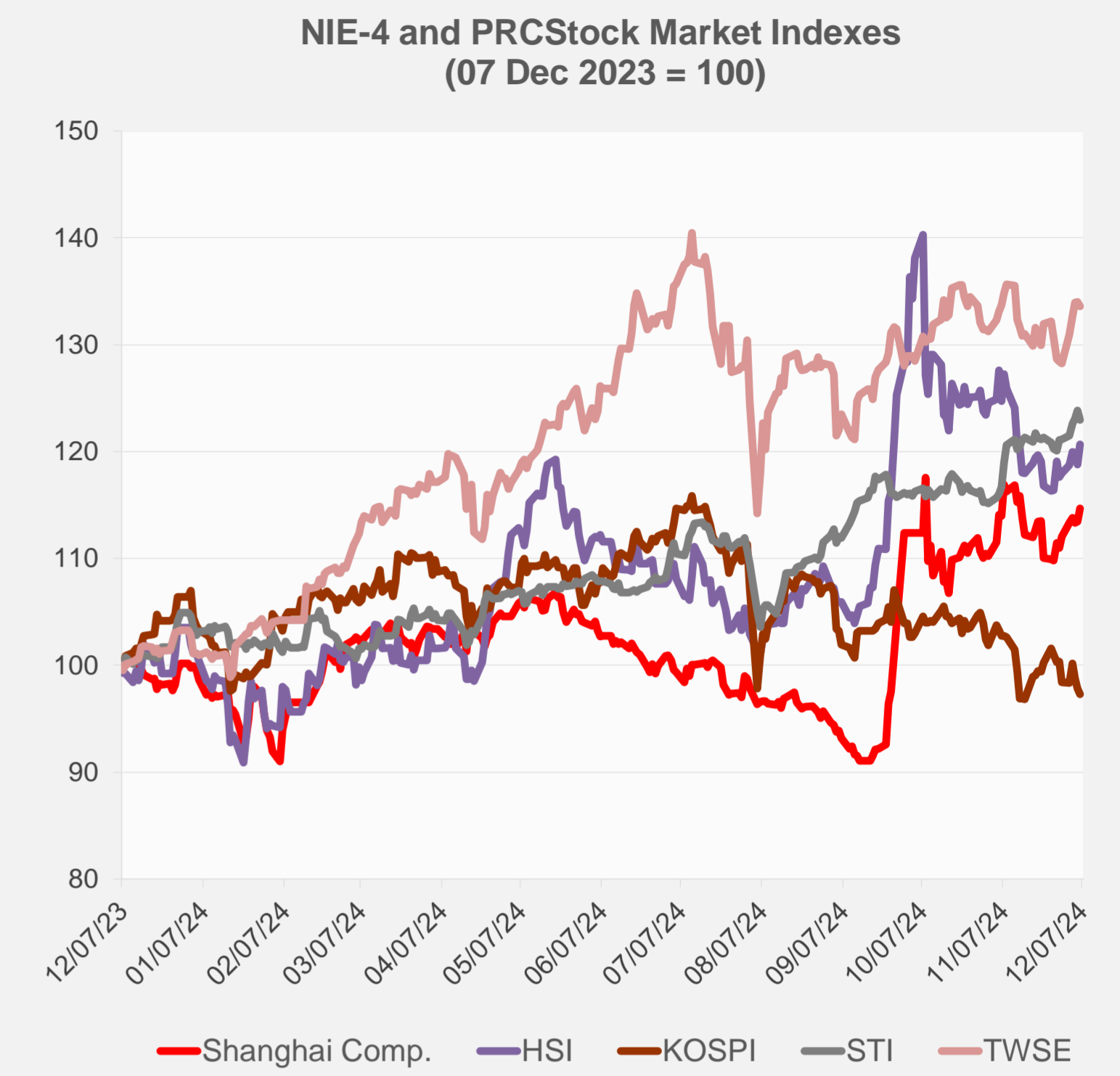
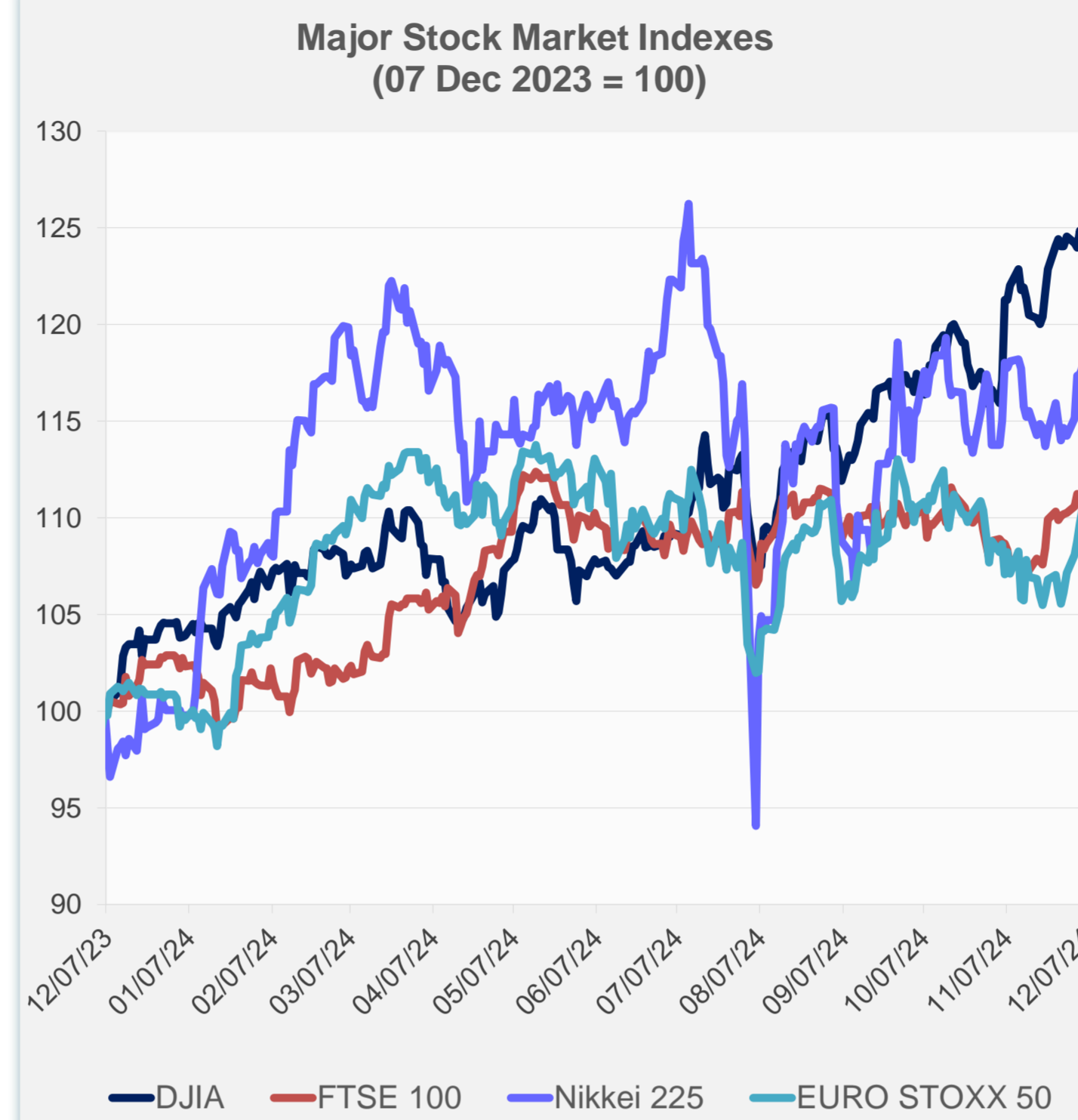
Note: Negative/Decreasing values indicate depreciation of local currency, and positive/increasing values indicate appreciation.
Source: ADB calculations using data from Haver Analytics.



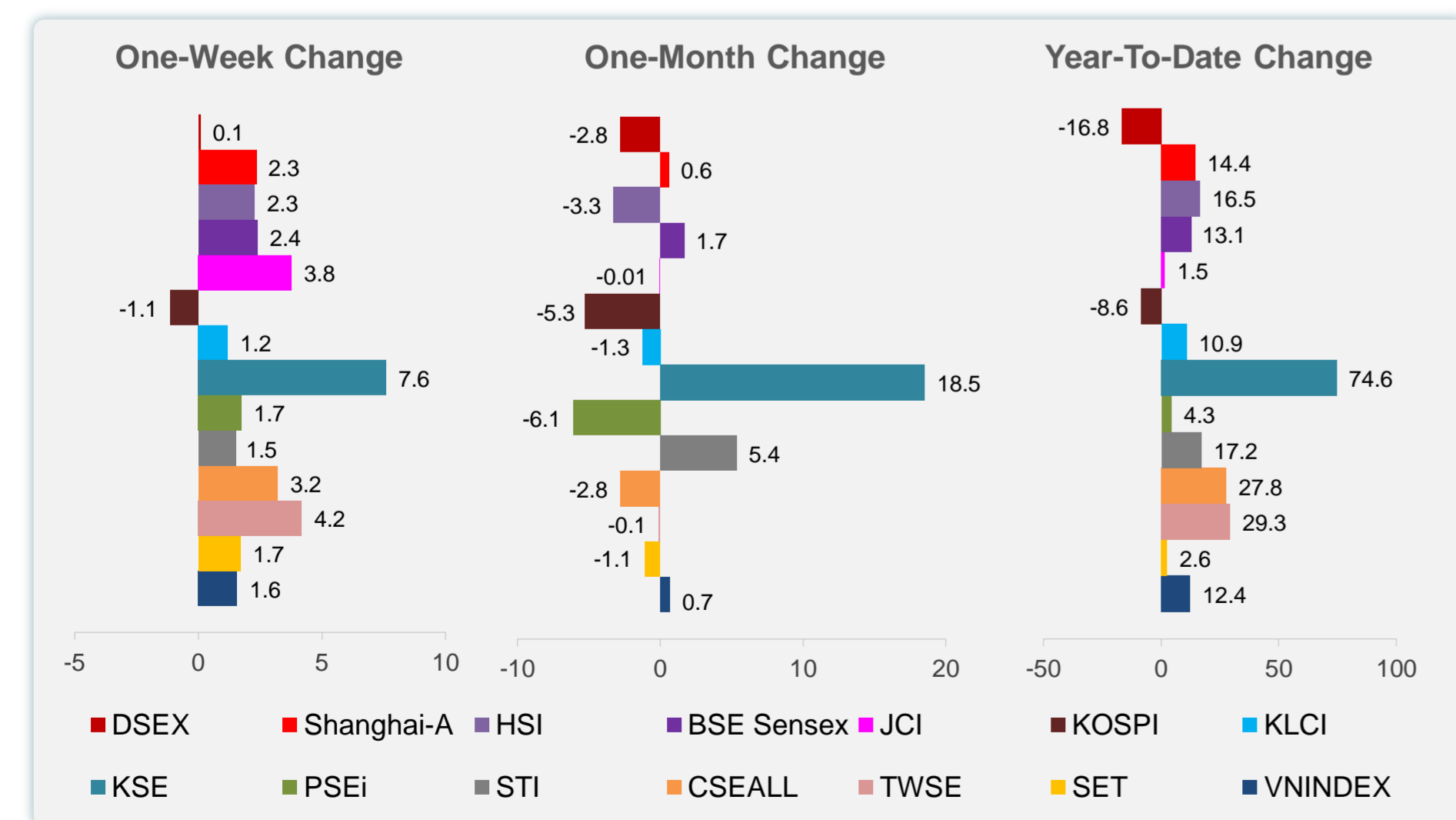
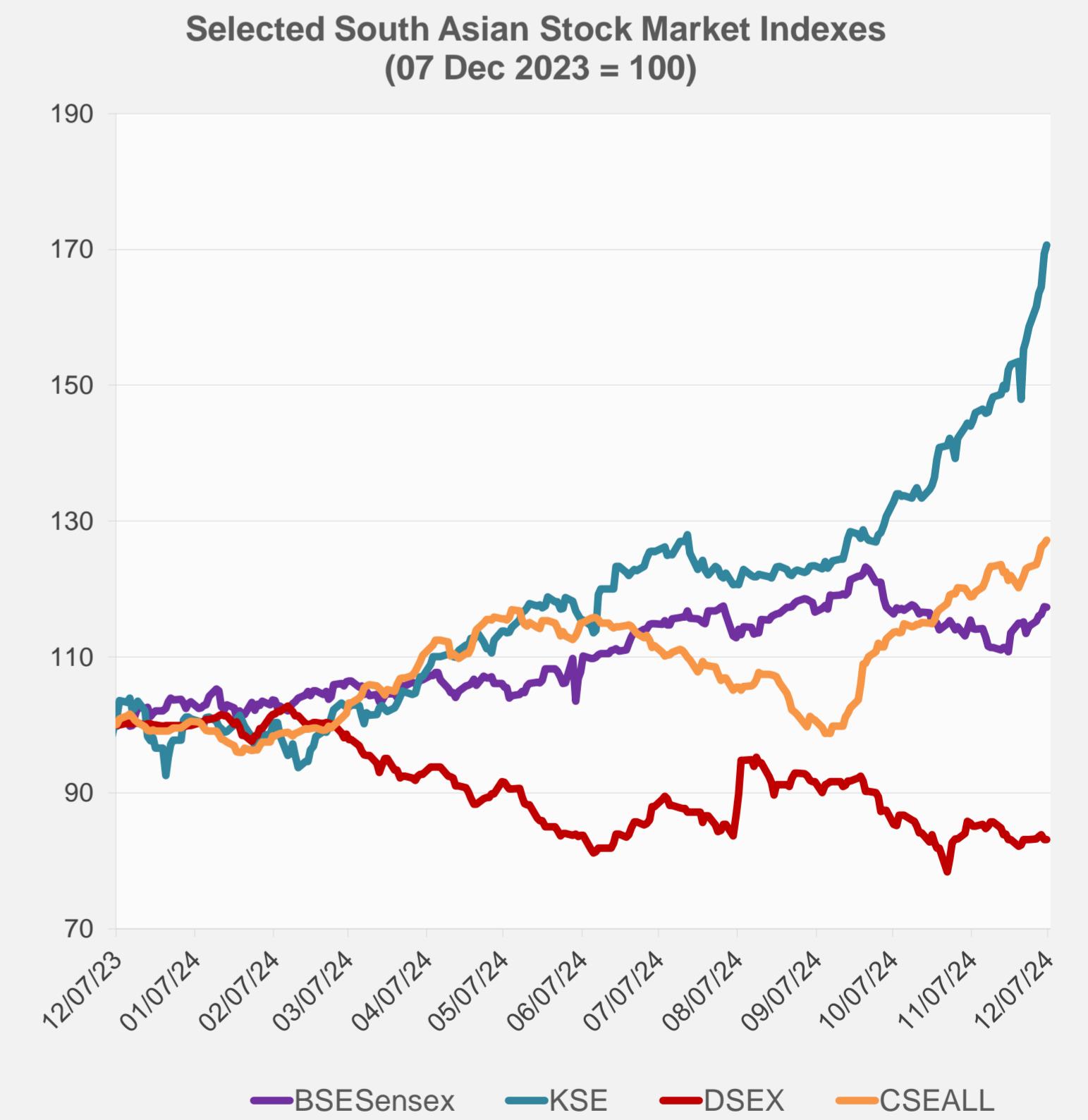
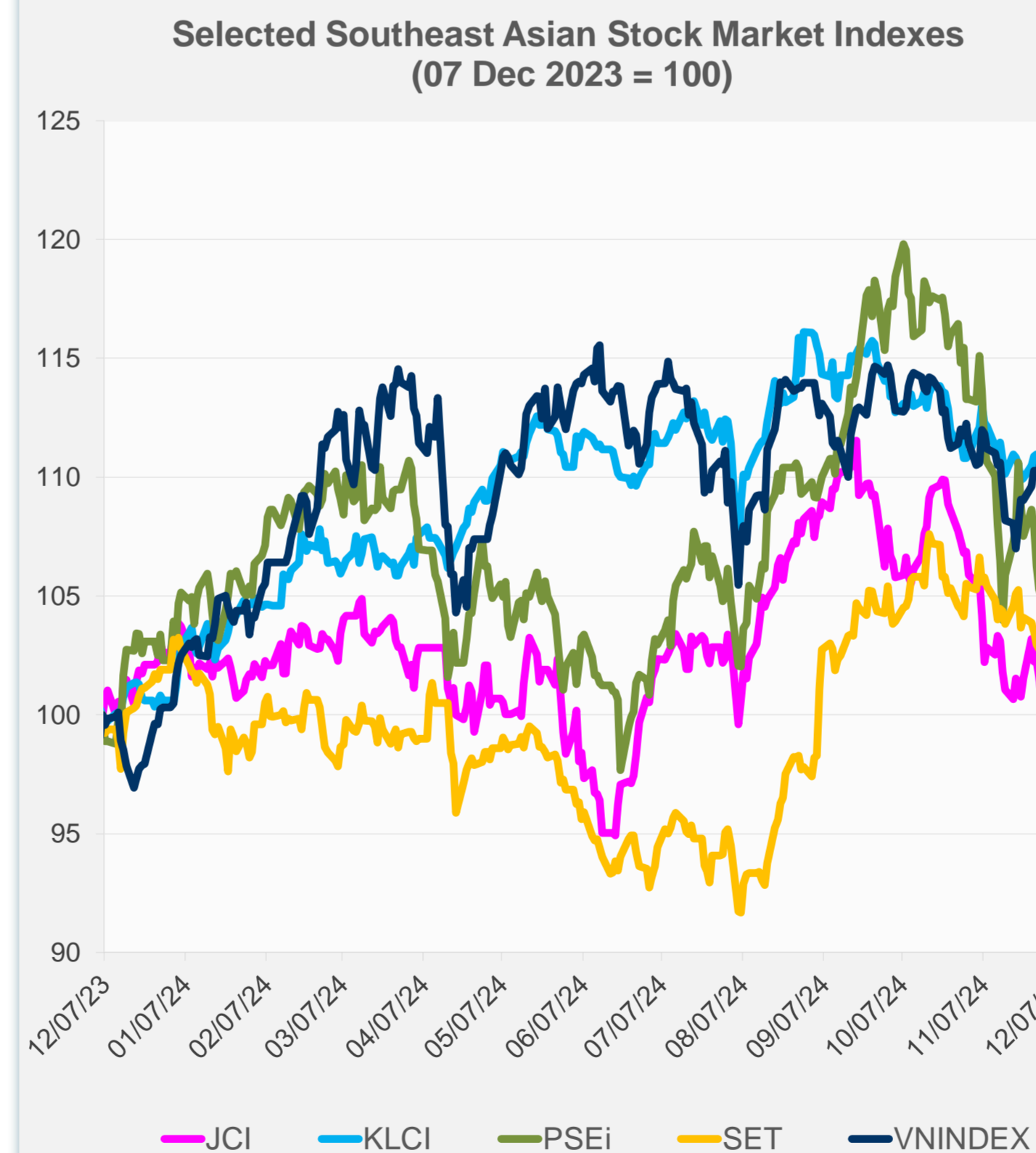
Source: Haver Analytics.

Daily Market Watch STOCK INDEXES

	Latest Closing	% change from Previous Day	% change from 01-Jan-24
US Dow Jones Ind Avg	44,642.52	-0.28	18.45
US NASDAQ	19,859.77	0.81	32.30
US S&P 500	6,090.27	0.25	27.68
UK FTSE 100	8,308.61	-0.49	7.44
EURO STOXX 50	4,977.78	0.53	10.09
Japan NIKKEI 225	39,091.17	-0.77	16.81
Bangladesh DSEX	5,196.82	0.00	-16.76
PRC Shanghai Comp.	3,404.08	1.05	14.43
Hong Kong, China HSI	19,865.85	1.56	16.53
India BSE Sensex	81,709.12	-0.07	13.06
Indonesia JCI	7,382.79	0.95	1.51
Korea, Rep. of KOSPI	2,428.16	-0.56	-8.55
Malaysia KLCI	1,613.25	-0.15	10.90
Pakistan KSE 100	109,053.95	0.75	74.62
Philippines PSEi	6,729.14	0.57	4.33
Singapore STI	3,796.16	-0.69	17.16
Sri Lanka CSEALL	13,613.37	0.40	27.78
Taipei, China TWSE	23,193.27	-0.32	29.35
Thailand SET	1,451.96	0.08	2.55
Viet Nam VNINDEX	1,270.14	0.21	12.41



NIE = Newly Industrialized Economies



Sources: ADB calculations using data from CEIC Data Company and Haver Analytics.



Sources: CEIC Data Company and Haver Analytics.

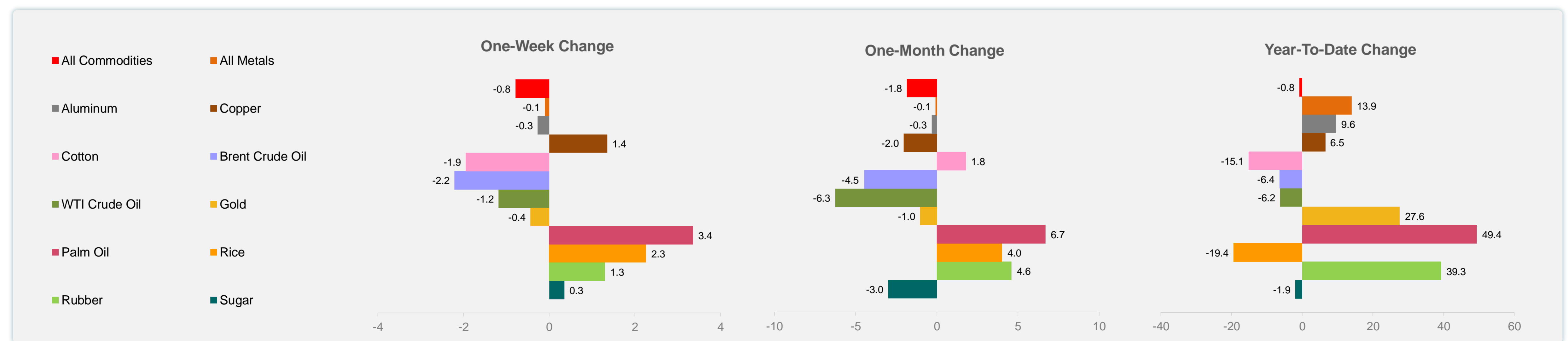
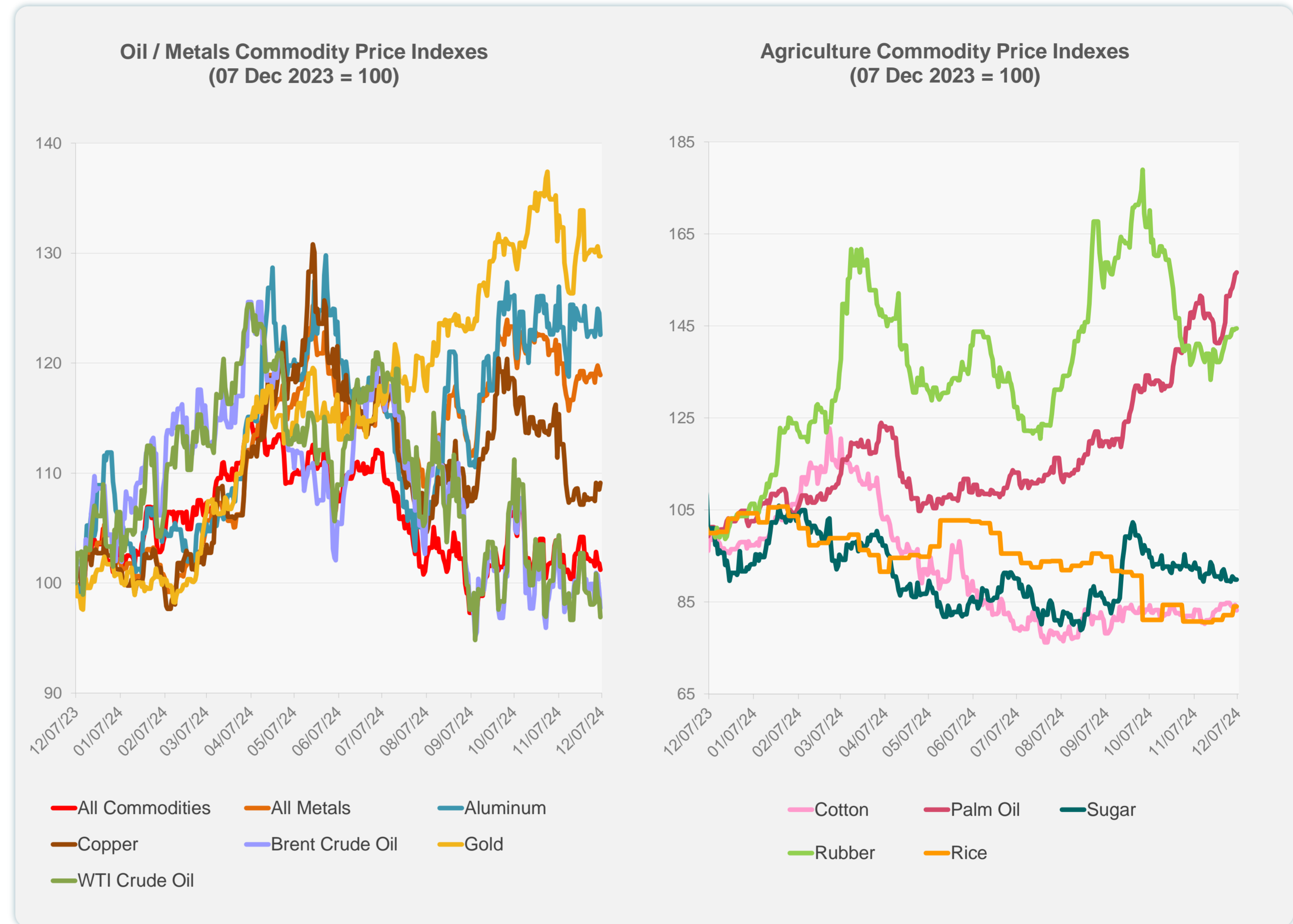
Daily Market Watch
COMMODITY PRICES

9 December 2024, 9:00 AM Manila

	Unit	Latest Closing	% change from Previous Day	% change from 01-Jan-24
S&P All Commodities	US\$	531.48	-0.59	-0.78
S&P All Metals	US\$	316.09	-0.23	13.94
Aluminum	US\$/metric ton	2,569.84	-1.57	9.56
Copper	US\$/metric ton	9,011.91	0.56	6.47
Cotton	US cents/lb	66.61	-1.46	-15.15
Brent Crude Oil	US\$/barrel	72.63	-1.53	-6.41
WTI Crude Oil	US\$/barrel	67.20	-1.61	-6.21
Gold	US\$/troy oz	2,631.67	0.00	27.57
Palm Oil	US\$/metric tonne	1,208.43	0.25	49.38
Rice ¹	US\$/metric ton	543.00	0.00	-19.44
Rubber ²	US\$/kg	241.10	0.04	39.28
Sugar	US cents/lb	20.08	0.00	-1.91

¹ Latest closing price from 4 December 2024.

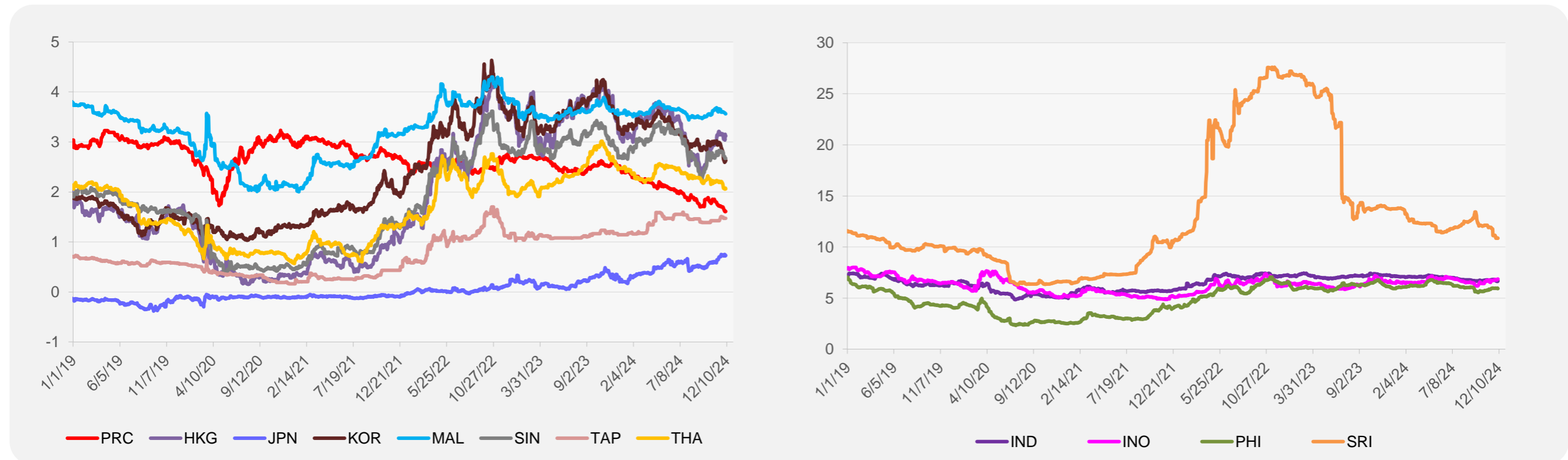
² Singapore Exchange, Ribbed Smoked Sheet Rubber.



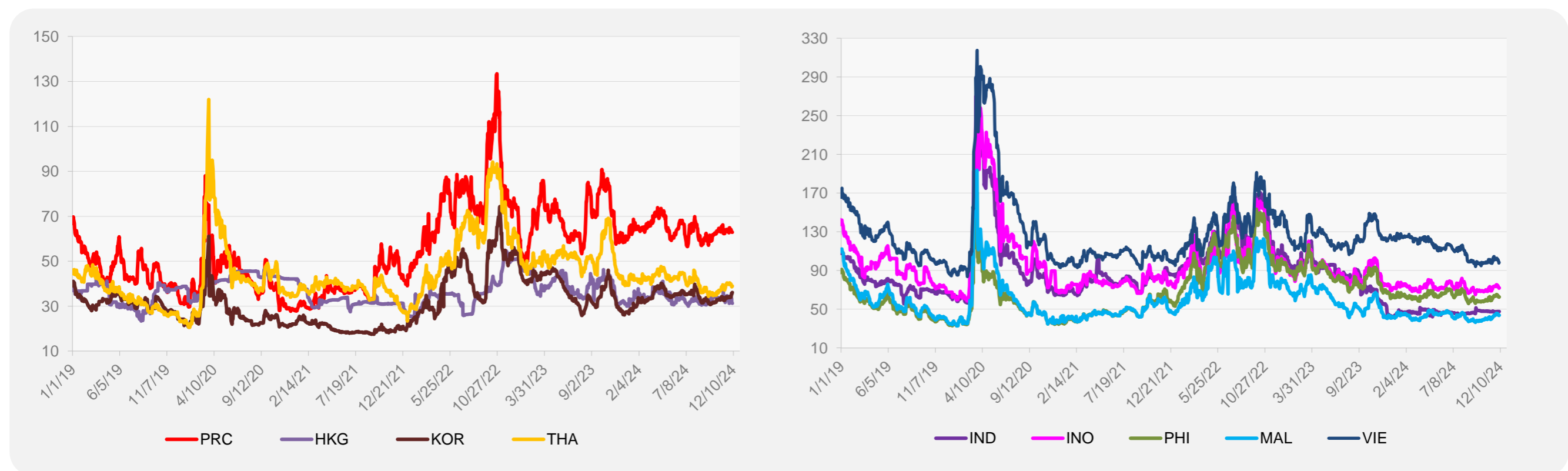
Source: ADB calculations using data from Bloomberg.

ASIA REGIONAL INTEGRATION CENTER
Regional Cooperation and Integration Division (ERICI)
Economic Research and Development Impact Department (ERDI)

5-YEAR LOCAL CURRENCY GOVERNMENT BOND YIELDS (%)



5-YEAR CREDIT DEFAULT SWAP¹



¹ In USD and based on sovereign bonds.
Source: ADB calculations using data from Bloomberg.